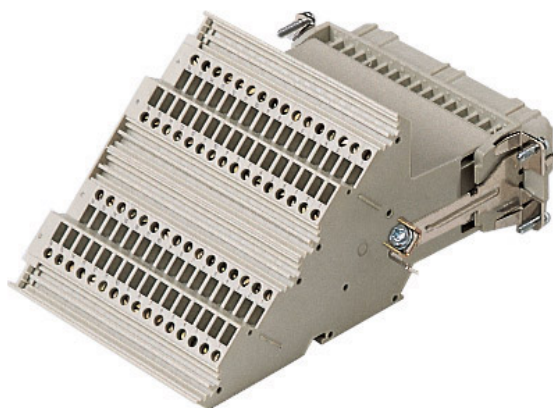








Product Sheet

Part Number: CTF 64 R



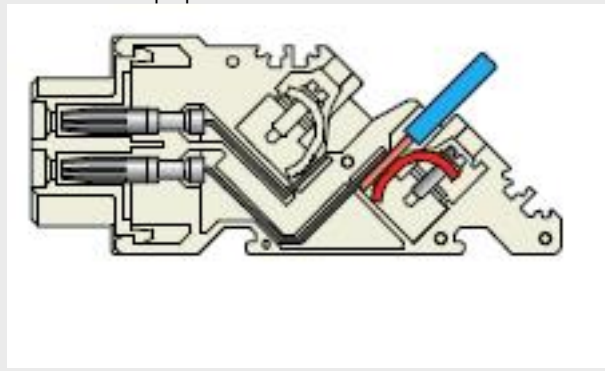
| | |
|---------------------------|---|
| Family | CLASS insert series |
| Version | with terminal block, screw terminal connection |
| Series | CT |
| Product type | with female contacts |
| Type | right side mounting |
| Model | female insert |
| Reference standard | EN 61984 (2001-11) |
| Contact type | silver plated |
| No. of poles | 64 poles +  |
| Voltage (V) | 250V |
| Current (A) | 10A (A.C./D.C.) |
| Wire section | 0,75mm ² - 2,5mm ² |
| Awg size | 18 - 14 |
| Quality mark |      |

The information and the dimensions contained are not binding and may be changed without prior notice.
The drawing's dimensions are in mm.

| | |
|----------------------------------|---|
| IP degree of protection | degree of protection IP20 without enclosure, IP65, IP66, IP67 (EN 60529) and IP69K (DIN 40050 - 9) with enclosure |
| Fixing centre distance | size "104.27" only bulkhead mounted housing |
| Impulse withstand voltage | 4kV |

Pollution degree 3

Notes CT ... : for non-prepared conductors



The information and the dimensions contained are not binding and may be changed without prior notice.
The drawing's dimensions are in mm.